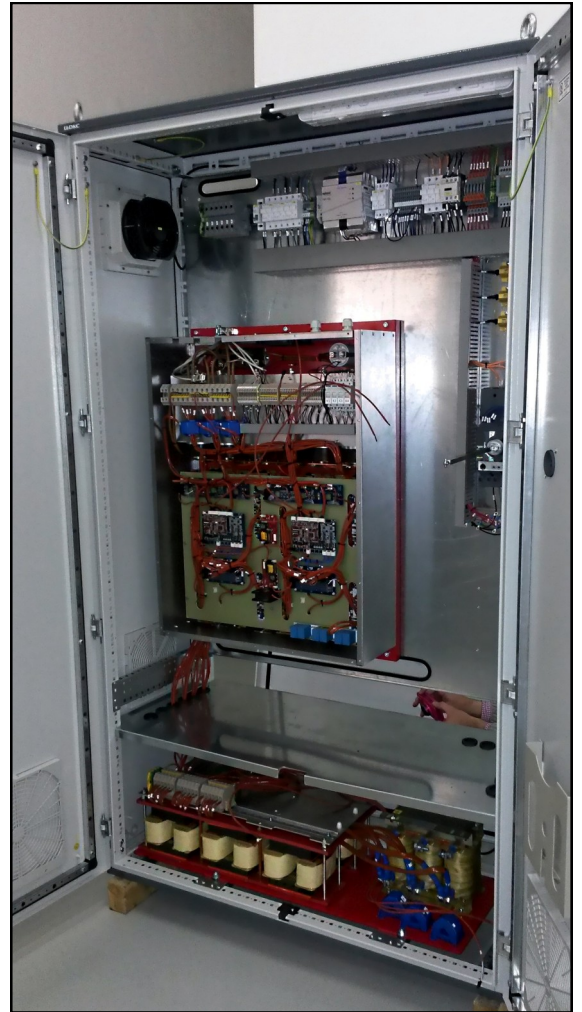


H96



H96	Weight	300 kg
	Output power	100 kW
	Max. input voltage	450 Vac
	Input switching frequency	Up to 35 kHz
	Output switching frequency	20 kHz
	Nominal phase current	160 A
	Harmonic distortion	<5%
	Dimensions	200X120X60 cm
	Cooling	Liquid, 2X10 l/m, 25°C

